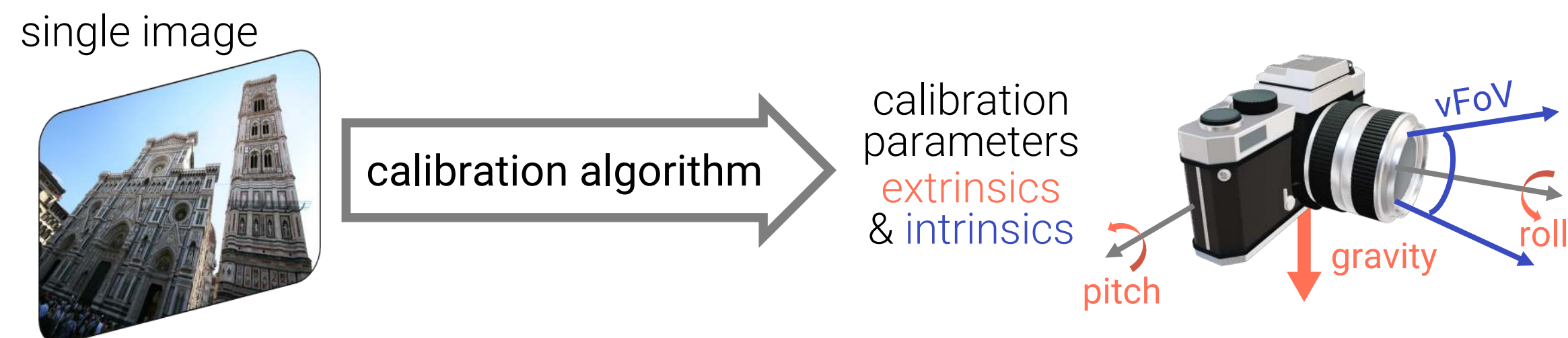
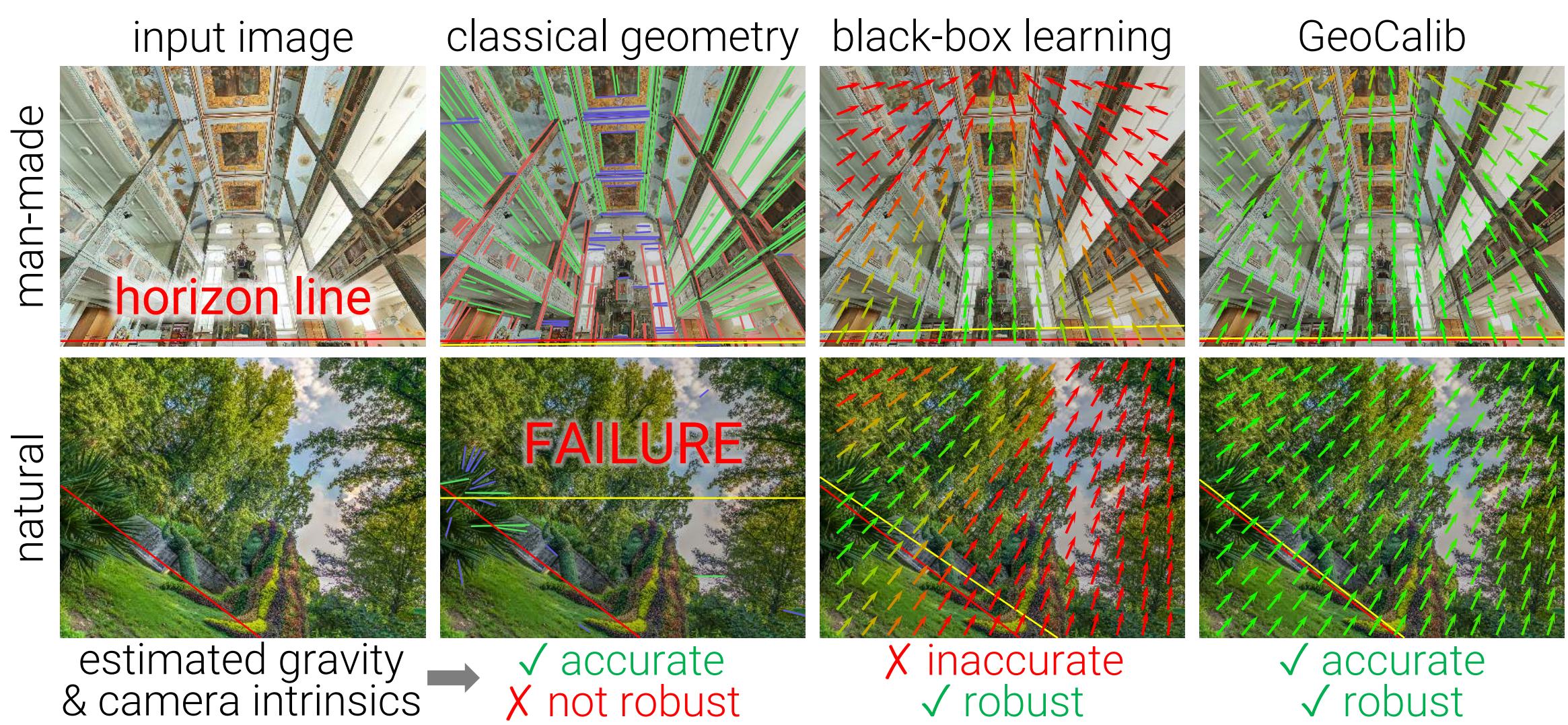


Problem setup & overview

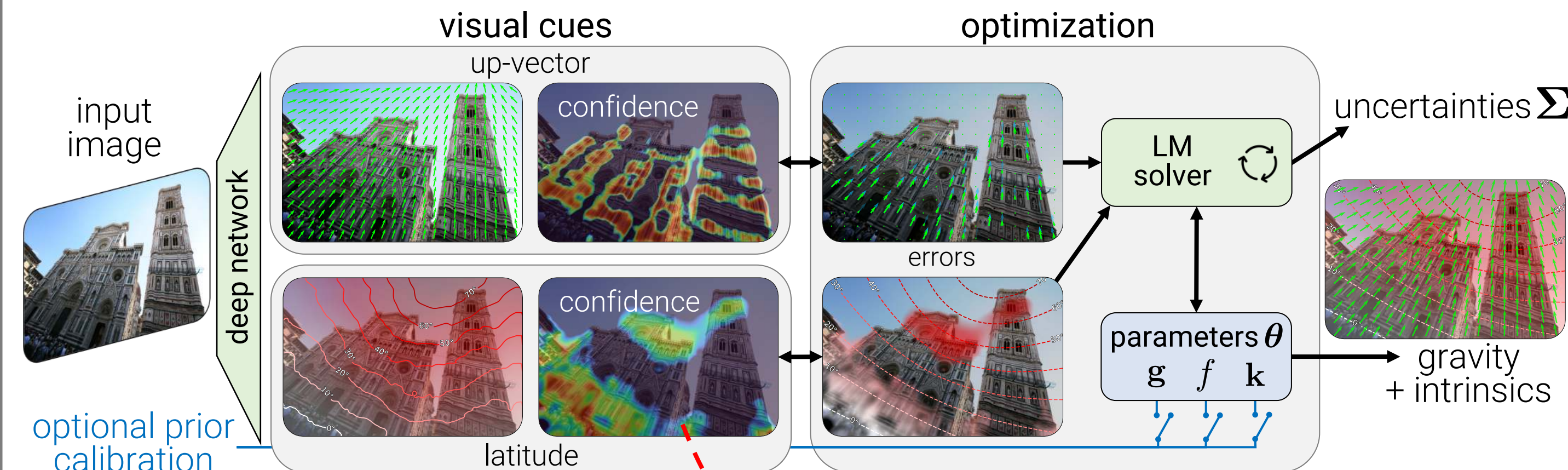


Main approaches: geometry (lines & vanishing points) vs end-to-end learning

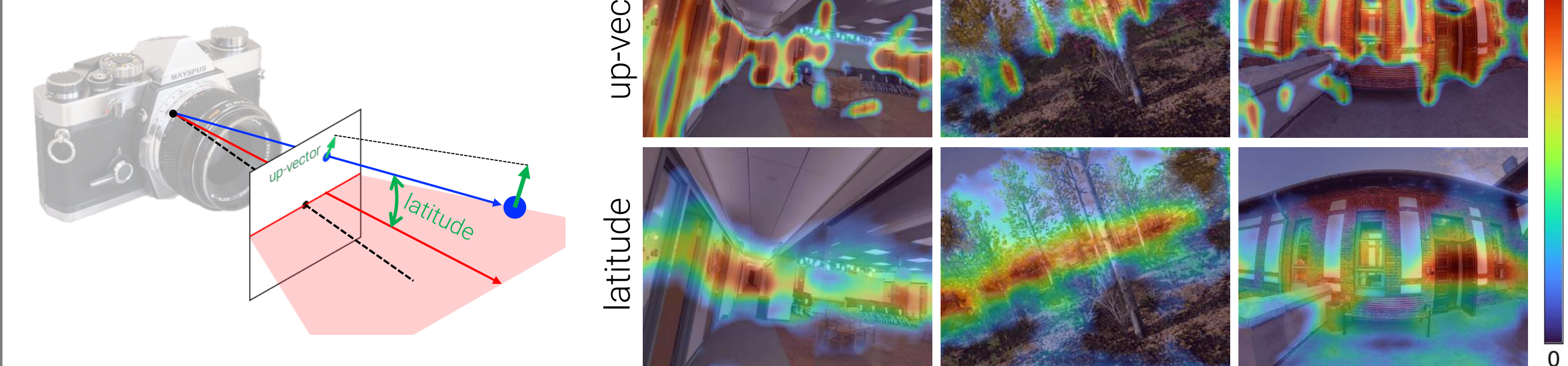


Public weights with permissive license: github.com/cvg/GeoCalib

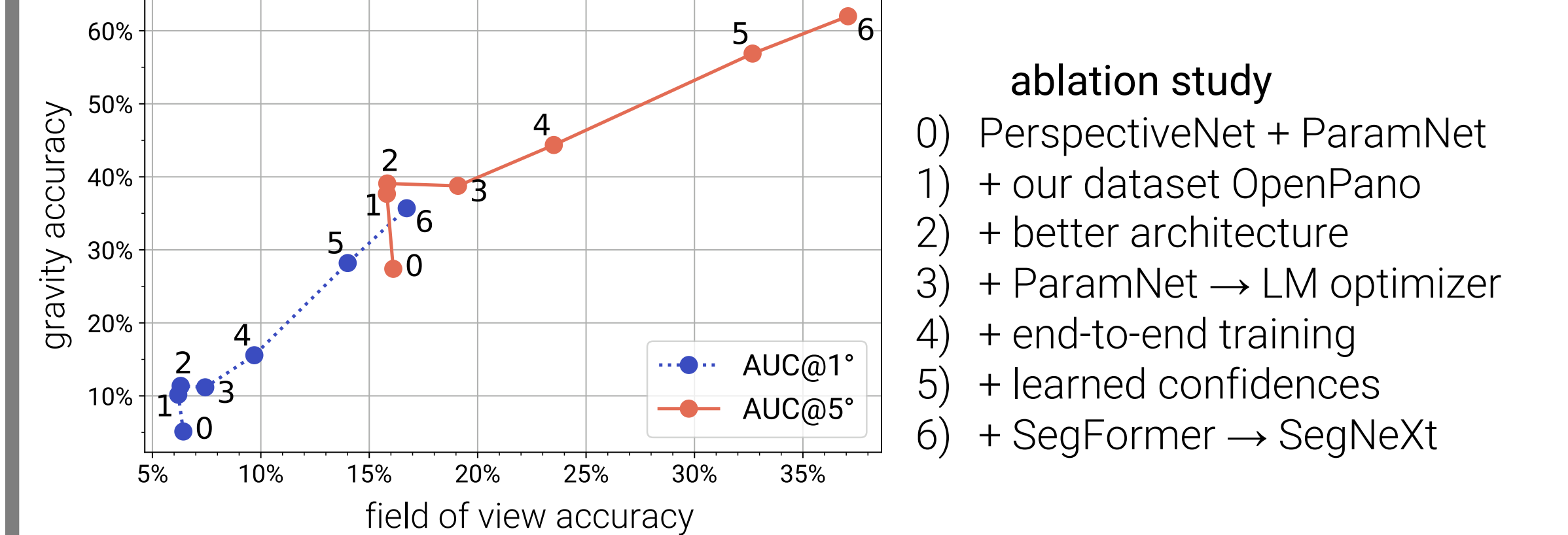
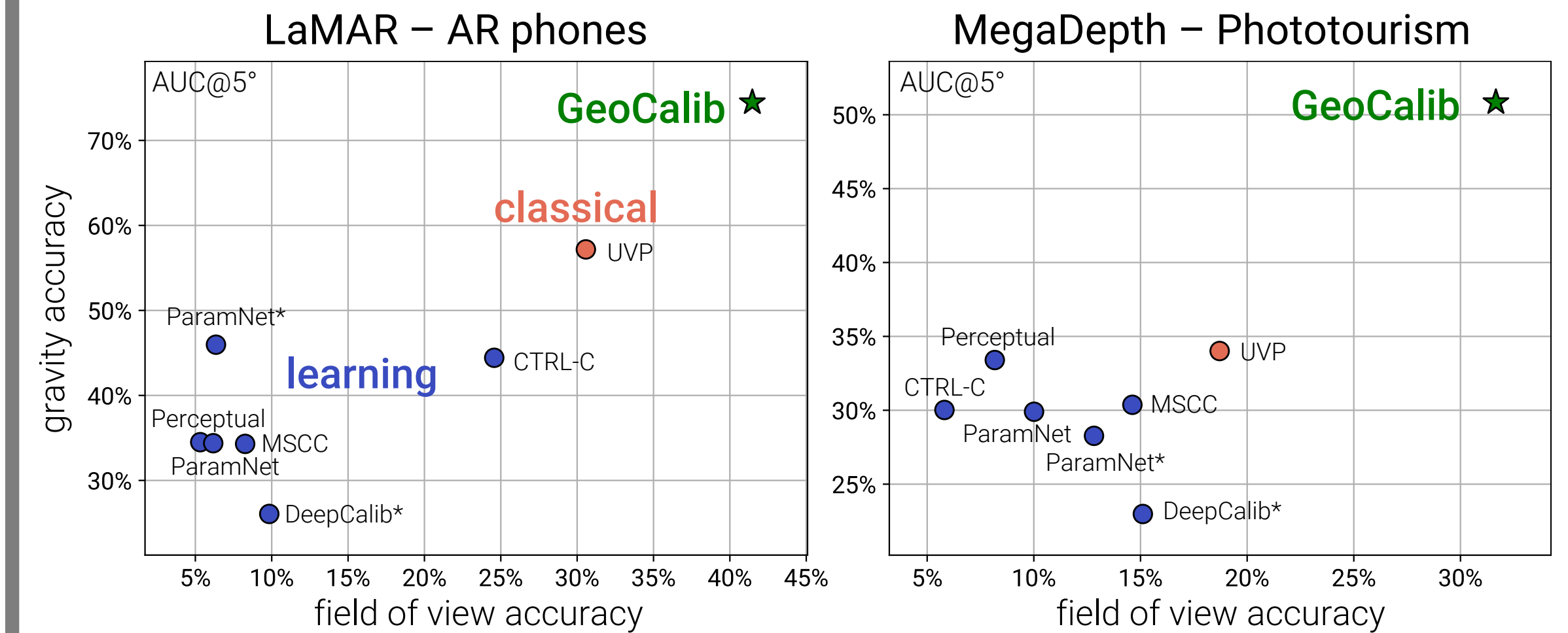
Combining learning with classical geometry



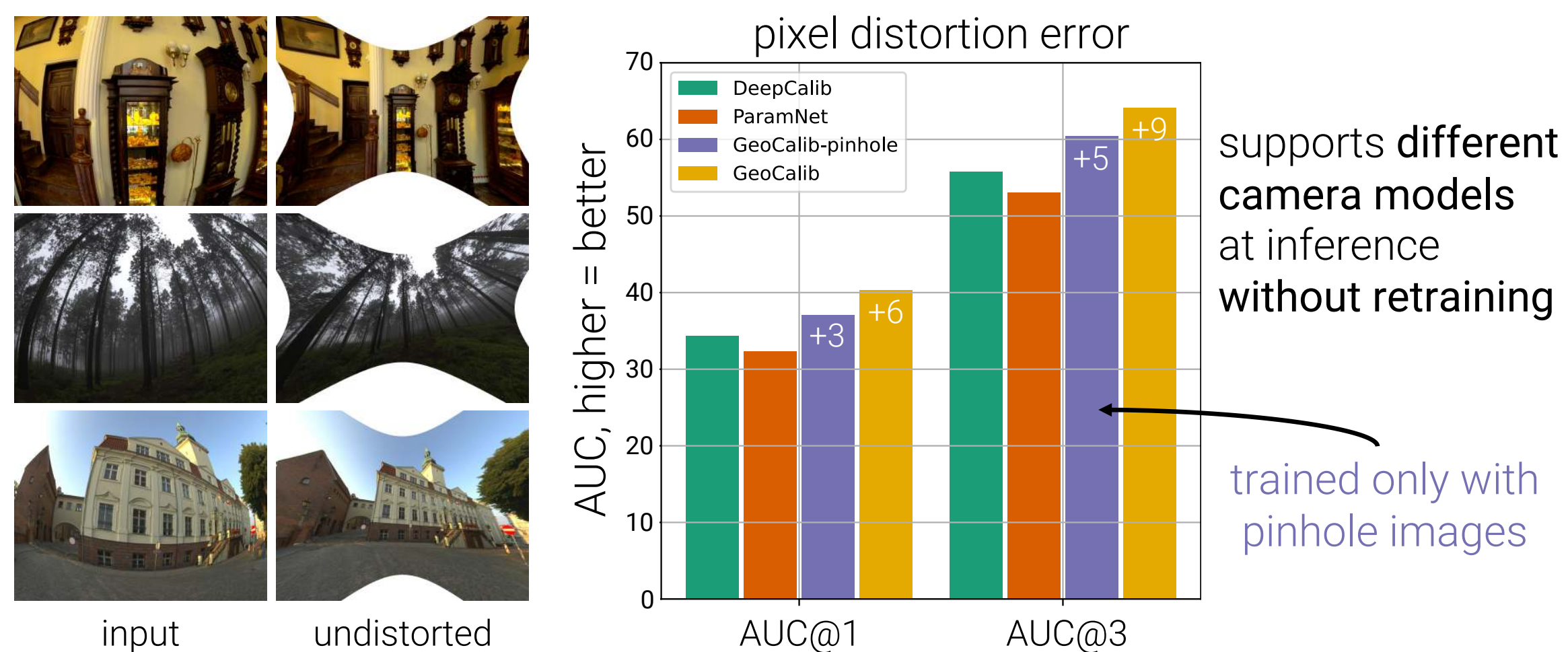
calibration = align perspective fields



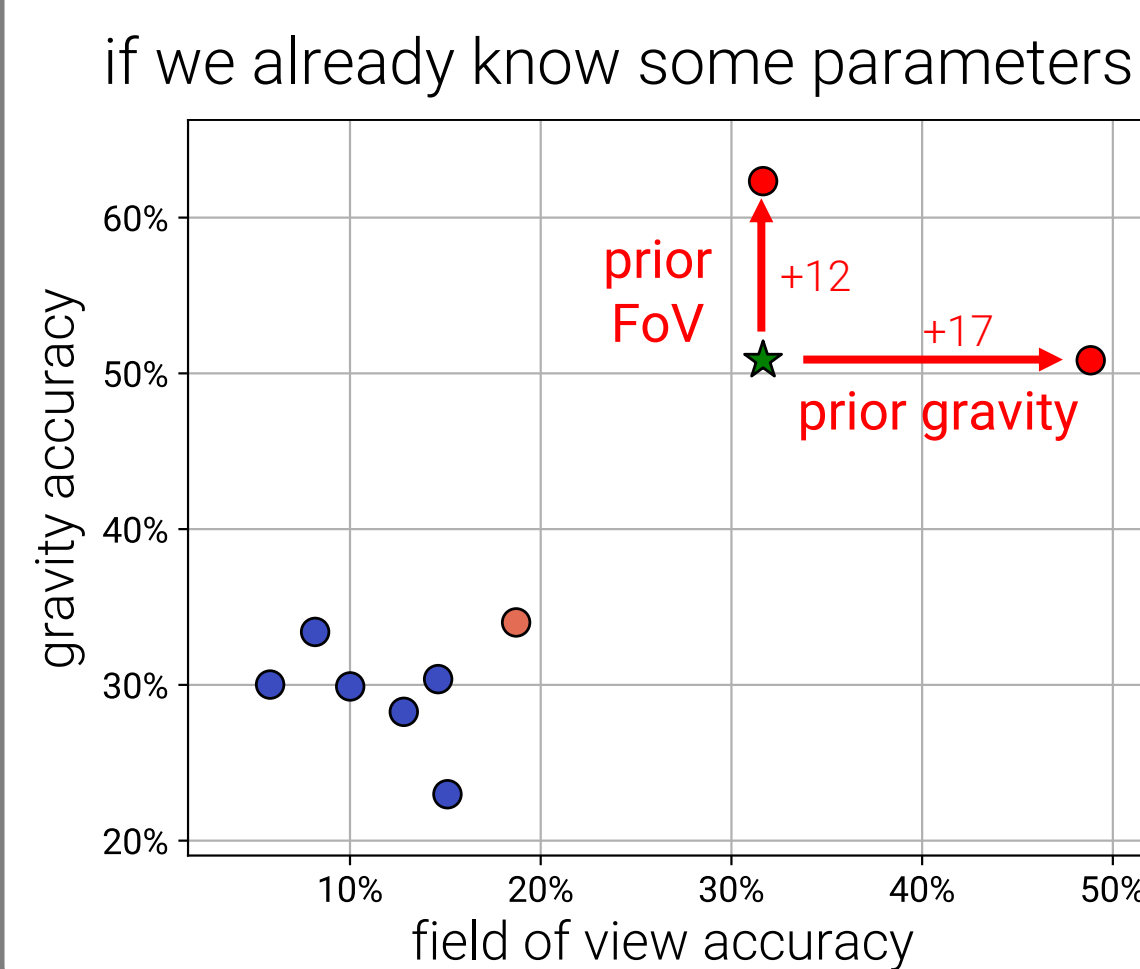
Accurate and robust calibration



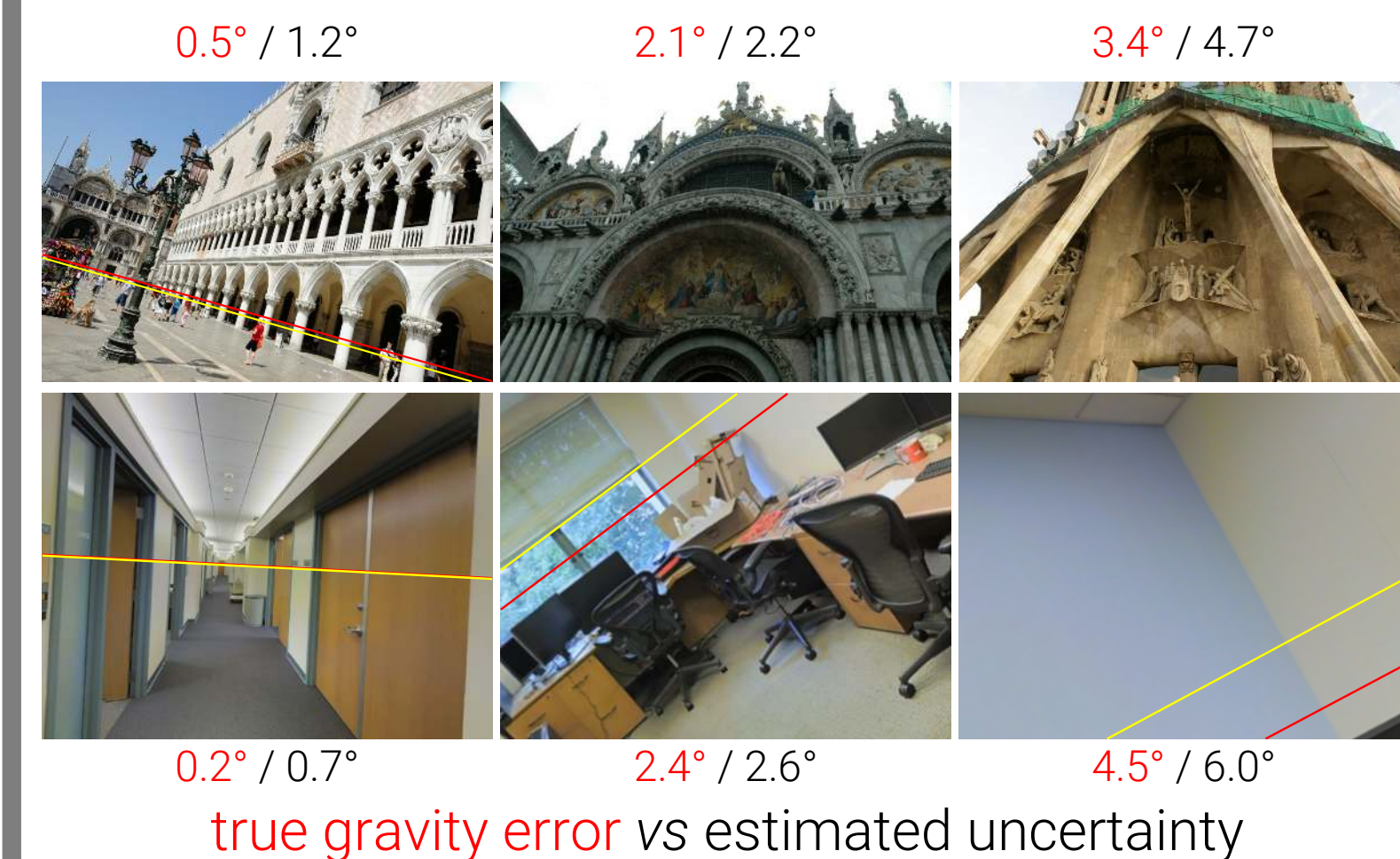
Optimize any camera model at inference



Leverage partial priors



Flag failures with uncertainty



Jointly optimize images without visual overlap

